



# Quaker Hill Elementary School

Christopher Discordia, Principal  
cdiscordia@waterfordschools.org



Our students had a blast during the Tumbling Unit in PE this week.





# Quaker Hill News



Monday  
January 15th  
No School

## Week of January 8th-12th

Monday - D

Tuesday - A

Wednesday - B

Thursday - C

Friday - D

## Lunch Menu for the week of January 8th-12th

**Mon:** Cheese pizza square, baby carrots, cucumbers, ranch, diced peaches, milk

**Tue:** French toast sticks, syrup, chicken sausage links, potato tots, mango juice, strawberry cup, milk

**Wed:** Chicken tenders, potato wedges, corn, biscuit, applesauce, milk

**Thu:** Breaded ravioli, mozzarella sticks, marinara sauce, breadstick, green beans, diced pears, milk

**Fri:** Cheeseburger, lettuce, tomato, baked beans, fries, Sidekick, milk



# CHANGE OF PLANS

QHPTA is ADJUSTING the schedule of  
events slightly

MOVIE NIGHT 01/05/24 is CANCELED.

FAMILY POOL PARTY for 01/22/24  
CANCELED

REMINDER:  
Glow Dance is schedule for 01/26/2024

Pasta Dinner & Basket Bonanza it  
scheduled for 02/02/2024

# SPRING 2024

## WATERFORD YOUTH LACROSSE

**REGISTER ONLINE NOW!**

[www.waterfordyouthlacrosse.org](http://www.waterfordyouthlacrosse.org)

### Grades K-8

Instructional (K-2): \$30

Equipment available to borrow for the season. No USA Lacrosse Membership or Uniform required.

Travel Teams: \$185 \*Includes Uniform\*

10U Grades 3-4

12U Grades 5-6

14U Grades 7-8

**\*\*NEW Custom & Personalized Uniforms for all Travel Players\*\***

\*All travel players must have a valid USA Lacrosse Membership\*

[www.usalacrosse.com](http://www.usalacrosse.com)

REGISTRATION CLOSES ON 2/1

**Grab your stick and  
let's dominate the field  
in the 2024 season!**



**Recruit a  
friend...score a  
WYLA gift!**

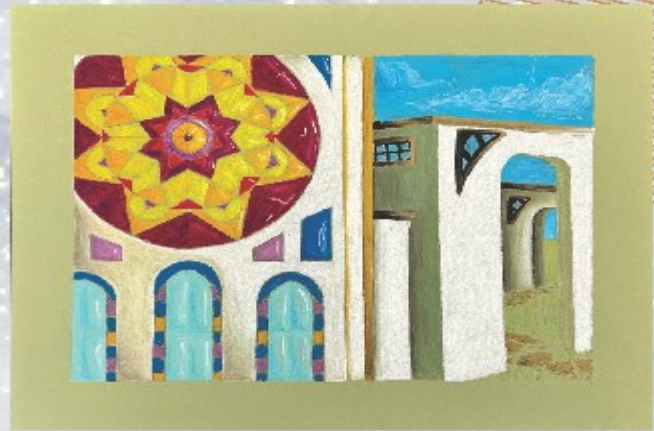


Follow us  
[@waterfordyouthlacrosse](https://www.instagram.com/waterfordyouthlacrosse)





**Nix Barreau NLHS**



**Kla Key WHS**



**Theany Nguyen SAINTS**

# Whalers, Lancers & Saints

**HIGH SCHOOL EXHIBITION OPENING RECEPTION  
SATURDAY, JANUARY 6TH 6-9PM  
ON DISPLAY UNTIL JANUARY 20TH, 2024**

**HYGIENIC.ORG**

roots. revitalization. renaissance.

**HYG  
ART**

# Waterford Soccer Club

## Spring Registration opens - January 1, 2024

**Travel League \$100**

Born 2010 - 2015

(2009 8th graders)

**Rec League \$80**

Born 2016 - 2018

**Tykes \$60**

Born 2019 - 2020

No Assessments for Spring

Travel open: 1/1/24 - 3/15/24

\$30 Late fees start: 3/1/24

Travel closes: 3/15/24

Rec open: 1/1/24 - 4/1/24

\$30 Late fees start: 3/15/24

Rec closes: 4/1/24

Tykes open: 1/1/24 (Never closes)



**REGISTER ONLINE AT:**

**[WWW.WATERFORDSOCCER.ORG](http://WWW.WATERFORDSOCCER.ORG)**

**QUESTIONS EMAIL: [WTFDSOCCERREGISTRAR@YAHOO.COM](mailto:WTFDSOCCERREGISTRAR@YAHOO.COM)**



**WATERFORD**  
Youth & Family  
Services

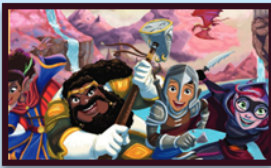
# Winter Afterschool Programs

10 week programs start week of Jan 8th

**Healthy Snack  
Provided each  
class!**

Waterford Public  
School students can  
take bus from school  
directly to the  
Community Center!

**Classes fill up  
quickly, be sure to  
create a profile  
using the link  
below.**

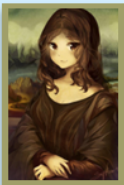


## Dungeons and Dragons

Are you ready to embark on an epic journey filled with mythical creatures, daring quests, and endless adventure? Join our after-school Dungeons & Dragons classes and unleash your imagination in a world of magic and mystery! Throughout the program, you'll learn the art of teamwork and creativity, working with fellow adventurers to overcome challenges, create unforgettable stories, and develop unique characters with their own backgrounds and abilities. Sharpen your critical thinking and

decision-making skills as you face unexpected situations in a dynamic and ever-changing world. Every week, embark on thrilling campaigns filled with epic battles, intriguing NPCs, and epic quests!

- **Mondays 4th & 5th Grades [Dismissal— 5:45pm]**
- **Tuesdays Middle School A [Dismissal— 5:30pm]**
- **Wednesday Middle School B [Dismissal— 5:30pm]**
- **Thursday High School [Dismissal— 5:00pm]**



## FINE ARTS AND ANIME

Unleash your creativity in a captivating artistic journey that blends the best of Western fine arts with the enchanting world of Japanese influence and anime. Our art program is designed especially for middle to high school students, offering a unique opportunity to explore the rich traditions of both worlds while embracing modern pop culture.

**Tuesdays Middle School [Dismissal— 5:30pm]**



## MIXED MEDIA ART

We're calling all elementary schoolers to embark on a vibrant journey into mixed media art! Discover the thrill of combining paint, paper, fabric, and more to breathe life into your imagination. Our expert instructors will guide you through hands-on projects, from captivating collages to whimsical 3D creations. Boost your creativity, problem-solving skills, and passion for art in this unforgettable artistic adventure. Join now and let the magic of mixed media art unleash your inner artist! **Wednesdays 1st thru 5th grade [Dismissal— 5:30pm]**



## Cooking with Class

Discover the art of cooking with our Middle School Chef Program! Join our expert chef to learn essential skills, explore flavors, and create delicious meals! Tuesdays: Grades 6th thru 8th.

**Tuesdays Middle School [Dismissal— 5:30pm]**



## Waterford Whiskers: Baking 101

Unleash your baking talents with our Waterford Whiskers Program! Discover the joy of creating sweet masterpieces, gain essential skills, and let your creativity rise to new heights! Tuesdays: Grades 3rd thru 5th

**Wednesdays 1st thru 5th grade [Dismissal— 5:30pm]**

**REGISTRATION IS NOW OPEN!**

Create a profile and register here: [waterfordyouthfamily.recdesk.com/Community/Home](http://waterfordyouthfamily.recdesk.com/Community/Home) or scan the QR code to the right.



**Youth Winter Reading Challenge**

Our Youth Winter Reading Challenge will run from January 8 to February 26. Pick up the sheet for your age group from the Children's Room or print from our website then complete all the fun activities with your family and friends. Turn completed sheets in to the Children's Room for a prize and to be entered into the grand prize raffle. Happy Winter Reading! For ages birth to 18.

Saturday, January 13, 2:00PM - 3:00PM AND Saturday, January 27, 10:00AM - 11:00AM

**Read to Scout**

We are excited to welcome a new certified therapy dog to the library! Come practice your reading skills and give Scout a cuddle in the Children's Room. All ages are welcome, no registration required.



Tuesday, January 16, 4:30PM - 5:30PM

**Read to Hodges**

Stop by the Children's Room anytime between 4:30 and 5:30 pm to read to one of our favorite furry friend, Officer Hodges! No registration required, all ages welcome.



Saturday, January 13, 10:30AM - 11:30AM

**Bilingual Family Storytime**

Join us for a special storytime with Ms. Emy! During this interactive and fun filled session, we will sing songs and read books in both English and Spanish. This program is aimed towards birth to five years old, but all families are welcome to attend, no registration required.



Tuesday, January 23, 5:30PM - 6:30PM

**Bilingual Pajama Storytime**

Join us for a cozy bilingual pajama storytime! Ms Emy will read books and sing songs in English and Spanish. Feel free to dress comfy and bring your favorite stuffed animal and a blanket. No registration required, this program is aimed towards ages birth to five but all families are welcome to join.

*Thank you to the Community Foundation of Eastern Connecticut for providing funding for these programs.*

Saturday, January 27, 2:00PM - 4:00PM

**Six Pointed Snowflakes**

Join Ms. Janice to make some lovely six pointed snowflakes using just wrapping paper and scissors. Ages 5 and up are welcome, no registration required.

Monday, January 29, 4:30PM - 5:30PM

**Junior Detectives Book Club**

Calling all aspiring detectives! Bring your favorite mystery book to life with fellow Investigators - you choose the book! We will also make a fun craft. Recommended for ages 6 to 8 years old, registration is required.

Mondays, January 8, 22 & 29, 10:30AM - 11:00AM

**Family Storytime**

Get ready to read and get your wiggles out! Join Ms. Jenna at the library for some fun stories, songs, and dancing. Recommended for ages birth to five years old with a caregiver. No registration is required.



All programs are free and open to the public



## DROP IN CRAFTS

Monday, January 8, 4:00PM - 6:30PM

Drop In STEM Adventure: STEM Station

Join us in the Children's Room between 4:00 and 6:30 pm to explore various STEM kits, that were donated by the local Girl Scouts. Recommended for ages 5 and up, no registration required.

Tuesday, January 9, 4:00 PM - 6:00 PM

Drop In Creation Station

Stop by the Children's Room anytime between 4:00 and 6:00 pm for a fun craft and to get your creativity flowing! Recommended for ages 5 and up. No registration required.



Monday, January 22, 4:00PM - 6:30PM

Drop in Craft: Cardinal

Join us in the Children's Room anytime between 4:00 and 6:30 pm to create a Winter Cardinal Handprint Craft. Recommended for ages 5 and up, no registration required.



Tuesday January 30, 4:00PM - 6:00PM

Build Club



Stop by the Children's Room anytime between 4:00 and 6:00 pm to build with a variety of STEM sets that we have! Recommended for ages 4 and older, no registration required.

Thursday, January 25, 4:30PM - 5:30PM

DIY Instruments: Thumb Piano

Join us to make your very own thumb piano to take home! All supplies provided, for ages 5 and up, registration required.

## GRAB & GO CRAFTS



Mittens

Jan 2 to Jan 19



Hot Chocolate Character

Jan 20 to Feb 2

Pick up supplies in the Children's Room to make Grab & Go crafts at home, while supplies last.

Step-by-step video tutorial on our Facebook page ([@waterfordpubliclibrary](https://www.facebook.com/waterfordpubliclibrary)).

## TEEN CORNER

Thursday, January 4, 5:30PM - 7:00PM

Craft Night

At this craft night participants will be learning how to knit an ear-warmer using only their fingers! For ages 11 and up, registration required.



Thursday, January 18, 5:30PM - 7:00PM

Teen Drop In Craft

Stop into the Teen Area of the library between 5:30 and 7:00 pm to make a fun craft! Ages 12 and up, no registration required.

Monday, January 22, 12:00PM - 2:00PM

Mindful Midterms

High school students - stop by the library meeting room between noon and 2:00 pm to hang and destress with your friends. We will have snacks, music, crafts, and a variety of games so you can relax and take a break from studying. No registration required.

Friday, January 5, 11:00AM - 12:00PM

Toddler Craft: Igloo



Join us for a fun-filled crafting session where the little ones will use their creativity, and fine motor skills to make an igloo. Mrs. Sharma will start the session with a short story! For ages 3 to 5 years old, no registration is required.

Friday, January 12, 11:00AM - 11:45AM

Story and Sensory Play

Join Miss Ashlee for a story and then explore multiple sensory stations! Recommended for ages 2 to 5 years old with a caregiver. No registration required.

Wednesday, January 17 11:00AM - 11:45AM

Toddler Art



This hands on art session is for young ones to explore through process art with the help of their adult. Miss Ashlee will start the session with a short story! For ages 3 to 5 years old, registration is required.

To keep up with all our activities follow us on Facebook and Instagram



@waterfordpubliclibrary



@waterfordlibraryct

# Waterford Little League

## Register online now for Spring Little League Season!

We are currently updating our website so to register for the upcoming season please scan the QR code



or go to

<https://leagues.bluesombrero.com/waterfordct>

### 2024 Spring Season Registration fees:

Majors/Minors - \$150

Coach Pitch - \$100

Co-ed Tee Ball - \$85

Payment Plans available!  
Family discount for families  
with 3 or more players.

### Important Registration Dates:

#### Majors/Minors

\$25 late registration fee begins 1/1  
Registration closes 1/15

#### Coach Pitch

\$25 late registration fee begins 2/1  
Registration closes 2/15



Please email  
[Registration@wllct.org](mailto:Registration@wllct.org) with any  
registration questions.

CONNECT WITH US



# January Lunch Menu

 LUNCH

**JANUARY 2024**  
WATERFORD SCHOOLS K-12

LUNCH PRICES  
Elementary \$3.25  
CLMS \$3.50  
WHS \$3.75  
\*Second Meal=\$4.25 - Adult Meal \$5.00

Please visit [www.myschoolbucks.com](http://www.myschoolbucks.com) to add funds to your child's account.

Monday	Tuesday	Wednesday	Thursday	Friday
1 <b>School Holiday</b>	2 Marinara sauce Cheesy Italian -pull-a-parts Marinara sauce Broccoli with ranch cup Cucumber slices Diced peaches Milk	3 Diced chicken Taco salad Tostitos salsa Golden corn Black beans 100% frozen fruit juice Sidekick Ice Cold Milk	4 <i>National Spaghetti day!</i> Meatballs & sauce Green beans Garlic knot Diced pears Milk	5 Chicken Nuggets Smile fries Peas Warm Dinner roll Applesauce Ice Cold Milk
8 <i>Meatless Monday!</i> Cheese pizza Square Baby carrots Cucumber wheels Ranch dressing Diced peaches Milk	9 <i>"Brunch for Lunch"</i> French toast Sticks/syrup Chicken sausage links Potato tots Mango juice Strawberry cup Milk	10 Chicken tenders Potato wedges Golden Corn Oven baked biscuit Apple sauce Ice Cold Milk	11 <i>"Italian Combo"</i> Breaded Ravioli Mozzarella sticks Marinara sauce WG Breadstick Green beans Diced pears Milk	12 Cheeseburger Sandwich salad cup (Lett & Tom) Baked beans Oven fries 100% Frozen fruit juice Sidekick Ice cold Milk
15 <b>School Holiday</b>	16 <i>"Yangs" Orange chicken</i> Brown Rice Green beans Warm dinner roll Applesauce Milk	17 Beef & Cheese Tacos Brown Rice Fiesta beans Mini corn muffin Mango juice Milk	18 <i>WHS exams</i> Big daddy Cheese Pizza Broccoli Cucumber slices Ranch cup Apple slices Ice cold Milk	19 <i>WHS exams</i> Crispy Chicken patty on a WG Roll Potato wedges Diced Carrots Orange Smiles Milk
22 <i>WHS/exams</i> <i>Meatless Monday!</i> Pizza Bites Cucumber wheels Fresh broccoli Ranch Dip Cup Apple juice Milk	23 <i>WHS/exams</i> Hotdog on a roll Oven fries Baked beans 100% frozen fruit juice Sidekick Ice Cold Milk	24 Pasta with Meat sauce Garden salad Garlic knot Diced peaches Ice Cold Milk	25 Beef Nachos Cheddar cheese sauce Fiesta beans Brown Rice Corn muffin Mango juice Orange smiles Milk	26 Grilled chicken on a WG Roll BBQ sauce cup Sweet Potato Fries Broccoli Applesauce Milk
29 <i>Meatless Monday!</i> Macaroni & Cheese Steamed Broccoli Sliced Carrots Warm Dinner Roll Diced Pears Milk	30 Cheeseburger Sandwich Salad Cup Baked Beans Oven Fries Apple Milk	31 Chicken & Waffles Syrup cup Sweet Potato Fries Green beans Apple sauce Milk	<p>For the 23-24 school year, students qualified for <b>Reduced status</b> will receive one lunch at no cost per day.</p> 	

All grain-based items offered are whole-grain rich which means that at least 51% of the grains in the item are whole grain (WG), all other grains are enriched

**A VARIETY OF FRESH FRUITS & VEGETABLES OFFERED DAILY** "Thoroughly cooking meats, poultry, seafood, shellfish or eggs reduces the risk of foodborne illness"

**Alternate Choice Yogurt Meal AVAILABLE Daily** or Alternate Salad meal offered when available (See kitchen manager)

Yogurt Meal =Yogurt, Mozzarella string cheese, baby carrots, craisins, goldfish crackers, dinner roll, milk

Salad Meal=Garden salad with egg, cheese stick garlic knot, fruit choice, milk

**Allergy Warning: Menu items may contain or come in contact with wheat, eggs, soy, nuts, and milk**

**\*Menus are subject to change**

THIS INSTITUTION IS AN EQUAL OPPORTUNITY PROVIDER

# January Breakfast Menu



## JANUARY 2024 WATERFORD SCHOOLS K-12

One daily Breakfast at **no charge**  
to all students this 2023-24 school year!

Monday	Tuesday	Wednesday	Thursday	Friday
1 <i>School Holiday!</i>	2 Confetti Pancakes Or assorted WG Muffins Or cereal Choice Milk Fresh Fruit 100% fruit Juice	3 Early Riser Egg/ Hashbrown Or assorted WG Muffins Or cereal Choice Milk Fresh Fruit 100% fruit Juice	4 Egg & Cheese Breakfast Sandwich Or assorted WG Muffins Or cereal Choice Milk Fresh Fruit 100% fruit Juice	5 Banana Bread Or assorted WG Muffins Or cereal Choice Milk Fresh Fruit 100% fruit Juice
8 Maple Waffle Or assorted WG Muffins Or cereal Choice Milk Strawberry cup 100% Fruit Juice	9 Egg & Cheese Breakfast Sandwich Or assorted WG Muffins Or cereal Choice Milk Fresh Fruit 100% fruit Juice	10 French Toast Sticks Or assorted WG Muffins Or cereal Choice Milk Fresh Fruit 100% fruit Juice	11 Mini Cinnamon Rolls Or assorted WG Muffins Or cereal Choice Milk Fresh Fruit 100% fruit Juice	12 Early Riser Egg /Hashbrown Or assorted WG Muffins Or cereal Choice Milk Fresh Fruit 100% fruit Juice
15 <i>School Holiday!</i>	16 Early Riser Egg/ Hashbrown Or assorted WG Muffins Or cereal Choice Milk Fresh Fruit 100% fruit Juice	17 Goody Breakfast Ring Or assorted WG Muffins Or cereal Choice Milk Fresh Fruit 100% fruit Juice	18 <i>WHS midterm exam</i> Egg & Cheese on a Roll Or assorted WG Muffins Or cereal Choice Milk Fresh Fruit 100% fruit Juice	19 <i>WHS midterm exams</i> Maple waffle Or assorted WG Muffins Or cereal Choice Milk Fresh Fruit 100% fruit Juice
22 <i>WHS midterm exams</i> Early Riser Egg/ Hashbrown Or assorted WG Muffins Or cereal Choice Milk Fresh Fruit 100% fruit Juice	23 <i>WHS midterm exams</i> Apple Frudel Or assorted WG Muffins Or cereal Choice Milk Fresh Fruit 100% fruit Juice	24 Egg & Cheese Breakfast Sandwich Or assorted WG Muffins Or cereal Choice Milk Fresh Fruit 100% fruit Juice	25 Banana Bread Or assorted WG Muffins Or cereal Choice Milk Fresh Fruit 100% fruit Juice	26 Cheese Omelet Or assorted WG Muffins Or cereal Choice Milk Fresh Fruit 100% fruit Juice
29 WG Blueberry munchkins Or assorted WG Muffins Or cereal Choice Milk Fresh Fruit 100% fruit Juice	30 Egg & Cheese Breakfast Sandwich Or assorted WG Muffins Or cereal Choice Milk Fresh Fruit 100% fruit Juice	31 Cinnamon Oatmeal Breakfast Round Or assorted WG Muffins Or cereal Choice Milk Fresh Fruit 100% fruit Juice	Alternate choice of assorted cereals and muffins Available daily/Fruit & milk included	

Please visit [www.myschoolbucks.com](http://www.myschoolbucks.com) to add funds to your child's account.

All grain-based items offered are whole-grain rich which means that at least 51% of the grains in the item are *whole grain (WG)*, all other grains are enriched  
**A VARIETY OF FRESH FRUITS OFFERED DAILY** "Thoroughly cooking meats, poultry, seafood, shellfish or eggs reduces the risk of foodborne illness"  
*Allergy Warning: Menu items may contain or come in contact with wheat, eggs, soy, nuts, and milk* \*Menus are subject to change  
**THIS INSTITUTION IS AN EQUAL OPPORTUNITY PROVIDER**

# January Pre-K Menu

**BREAKFAST** **JANUARY 2024** \* 1 daily Breakfast at "no cost" for all students this school year!  
**LUNCH** WATERFORD SCHOOLS PRE-K BREAKFAST AND LUNCH LUNCH \$3.25 MILK ONLY \$.75  
 Milk choices: 1% White or skim

Please visit [www.myschoolbucks.com](http://www.myschoolbucks.com) to check balance and/or add funds to your child's account.

Monday	Tuesday	Wednesday	Thursday	Friday
SCHOOL HOLIDAY! 1	Confetti Pancakes 100% juice Milk Cheesy -pull- a -parts Marinara sauce Broccoli & Ranch dip Diced peaches Milk 2	Early Riser Egg/ Hashbrown 100% Fruit Juice Milk Soft Chicken & Cheese Taco Corn Applesauce Milk 3	Egg & Cheese on a roll Applesauce cup Milk Spaghetti & meatballs Green beans Pears Milk 4	Banana Bread Milk Cheese stick Apple slices Chicken nuggets Smile fries Peas Milk 5
Cereal Milk Orange smiles 8	Banana Bread 100% juice Milk French toast sticks Potato tots Strawberry cups Milk 9	French Toast Sticks Blueberry Cup Milk Chicken Drumsticks Corn Applesauce Milk 10	Yogurt/mini muffin Apple slices Milk Sun butter Sandwich Mozzarella string cheese Cucumber slices Milk 11	Cereal Banana Milk 12
SCHOOL HOLIDAY 15	Cereal Milk Orange smiles 16	Banana Bread Milk Cheese stick apple slices 17	Cereal Banana Milk 18	Yogurt/mini muffin Apple slices Milk 19
Cereal Milk 100% Fruit Juice 22	Mini muffin /cheese stick Strawberry cup Milk 23	Cereal Banana Milk 24	Banana Bread Milk Cheese stick Apple slices 25	Cheese omelet 100% juice Goldfish grahams Milk 26
Yogurt/mini muffin 100% Juice Milk 29	Cereal Banana Milk 30	Oatmeal breakfast round Apple slices Milk 31	For the 23-24 school year, students qualified for <b>Reduced status</b> will receive breakfast and lunch at no cost	
Macaroni & Cheese Steamed broccoli Diced pears Milk	Cheeseburger on a WG Roll Baked beans Applesauce cup Milk	Chicken & waffles Green beans Milk		

All grain-based items offered are whole-grain rich which means that at least 51% of the grains in the item are *whole grain (WG)*, all other grains are enriched  
**A VARIETY OF FRESH FRUITS & VEGETABLES OFFERED DAILY** "Thoroughly cooking meats, poultry, seafood, shellfish or eggs reduces the risk of foodborne illness"  
 Alternate Choice Yogurt Meal available or Alternate Salad meal offered when available (See kitchen manager)  
 Yogurt Meal =Yogurt, Mozzarella string cheese, baby carrots, raisins, goldfish crackers, dinner roll, milk Salad Meal=Garden salad with egg, cheese stick garlic knot, fruit choice, milk  
 Allergy Warning: Menu items may contain or come in contact with wheat, eggs, soy, nuts, and milk \*Menus are subject to change  
 THIS INSTITUTION IS AN EQUAL OPPORTUNITY PROVIDER

# 2023-24 Elementary Letter Rotation Schedule

August 2023				
Mon	Tue	Wed	Thu	Fri
		30 A	31 B	

September 2023				
Mon	Tue	Wed	Thu	Fri
				1 C
	5 D	6 A	7 B	8 C
11 D	12 A	13 B	14 C	15 D
18 A	19 B	20 C	21 D	22 A
	26 B	27 C	28 D	29 A

October 2023				
Mon	Tue	Wed	Thu	Fri
2 B	3 C	4 D	5 A	6 B
	10 C	11 D	12 A	13 B
16 C	17 D	18 A	19 B	20 C
23 D	24 A	25 B	26 C	27 D
30 A	31 B			

November 2023				
Mon	Tue	Wed	Thu	Fri
		1 C	2 D	3 A
6 B		8 C	9 D	
13 A	14 B	15 C	16 D	17 A
20 B	21 C			
27 D	28 A	29 B	30 C	

December 2023				
Mon	Tue	Wed	Thu	Fri
				1 D
4 A	5 B	6 C	7 D	8 A
11 B	12 C	13 D	14 A	15 B
18 C	19 D	20 A	21 B	22 C*

January 2024				
Mon	Tue	Wed	Thu	Fri
	2 D	3 A	4 B	5 C
8 D	9 A	10 B	11 C	12 D
	16 A	17 B	18 C	19 D
22 A	23 B	24 C	25 D	26 A
29 B	30 C	31 D		

February 2024				
Mon	Tue	Wed	Thu	Fri
			1 A	2 B
5 C	6 D	7 A	8 B	9 C
12 D	13 A	14 B	15 C	16 D
		21 A	22 B	23 C
26 D	27 A	28 B	29 C	

March 2024				
Mon	Tue	Wed	Thu	Fri
				1 D
4 A	5 B	6 C	7 D*	8 A
11 B	12 C	13 D	14 A	15 B
18 C	19 D	20 A	21 B	22 C
25 D	26 A	27 B	28 C	

April 2024				
Mon	Tue	Wed	Thu	Fri
1 D		3 A	4 B	5 C
15 D	16 A	17 B	18 C	19 D
22 A	23 B	24 C	25 D	26 A
29 B	30 C			

May 2024				
Mon	Tue	Wed	Thu	Fri
		1 D	2 A	3 B
6 C	7 D	8 A	9 B	10 C
13 D	14 A	15 B	16 C	17 D
20 A	21 B	22 C	23 D	24 A
	28 B	29 C	30 D	31 A

June 2024				
Mon	Tue	Wed	Thu	Fri
3 B	4 C	5 D	6 A	7 B
10 C	11 D*	12 A*		



■ No School  
 \* Early Dismissal  
 Updated 12/20/2023

August 2023				
Mon	Tue	Wed	Thu	Fri
	1	2	3	4
7	8	9	10	11
14	15	16	17	18
21	22	23	24	25
28*	29*	FD	31	

- (2 days ~ 2 cumulative)
- 8/28 - ± Staff Convocation
  - 8/29 - \* PD - No School - PK-12
  - 8/30 - First Day of School

September 2023				
Mon	Tue	Wed	Thu	Fri
				1
SH	5	6	7	8
11	12	13	14	15
18	19	20	21	22
SH	26	27	28	29

- (19 days ~ 21 cumulative)
- 9/4 - School Holiday (Schools Closed)
  - 9/25 - School Holiday (Schools Closed)

October 2023				
Mon	Tue	Wed	Thu	Fri
2	3	4	5	6
SH	10	11	12	13
16	17	18	19	20
23	24	25	26	27
30	31			

- (21 days ~ 42 cumulative)
- 10/9 - School Holiday (Schools Closed)

November 2023				
Mon	Tue	Wed	Thu	Fri
		1	2	3
6	PD	8	9	SH
13	14	15	16	17
20	21	School Holiday		
27	28	29	30	

- (17 days ~ 59 cumulative)
- 11/7 - \* PD No School for Students - PK-12
  - 11/10 - School Holiday (Schools Closed for Students), P/T Conferences
  - 11/22 - 11/24 - School Holiday (Schools Closed)

December 2023				
Mon	Tue	Wed	Thu	Fri
				1
4	5	6	7	8
11	12	13	14	15
18	19	20	21	22
School Holiday				

- (16 days ~ 75 cumulative)
- 12/22 - Early Dismissal PK-12
  - 12/25 - 12/29 - School Holiday (Schools Closed)

January 2024				
Mon	Tue	Wed	Thu	Fri
SH	2	3	4	5
8	9	10	11	12
SH	16	17	18	19
22	23	24	25	26
29	30	31		

- (21 days ~ 96 cumulative)
- 1/1 - School Holiday (Schools Closed)
  - 1/15 - School Holiday (Schools Closed)
  - 1/18-1/23 - \*\* Midterm Exams: Early Dismissal 9-12

February 2024				
Mon	Tue	Wed	Thu	Fri
			1	2
5	6	7	8	9
12	13	14	15	16
SH	21	22	23	
26	27	28	29	

- (19 days ~ 115 cumulative)
- 2/19-2/20 - School Holiday (Schools Closed)

March 2024				
Mon	Tue	Wed	Thu	Fri
				1
4	5	6	PT	8
11	12	13	14	15
18	19	20	21	22
25	26	27	28	SH

- (20 days ~ 135 cumulative)
- \*\* 3/7 - P/T Conferences: Early Dismissal PK-12
  - 3/29 - School Holiday (Schools Closed)

April 2024				
Mon	Tue	Wed	Thu	Fri
1	PD	3	4	5
School Holiday				
15	16	17	18	19
22	23	24	25	26
29	30			

- (16 days ~ 151 cumulative)
- 4/2 - \* PD No School for Students - PK-12
  - 4/8 - 4/12 - School Holiday (Schools Closed)

May 2024				
Mon	Tue	Wed	Thu	Fri
		1	2	3
6	7	8	9	10
13	14	15	16	17
20	21	22	23	24
SH	28	29	30	31

- (22 days ~ 173 cumulative)
- 5/27 - School Holiday (Schools Closed)

June 2024				
Mon	Tue	Wed	Thu	Fri
3	4	5	6	7
10	11	LD	13	14
17	18	19	20	21
24	25	26	27	28

- (8 days ~ 181 cumulative)
- 6/6 - 6/11 - \*\* Final Exams: Early Dismissal 9-12
  - 6/11 - \*\* Early Dismissal PK-12
  - 6/12 - Last Day of School Early Dismissal PK-12



**NOTE:** Snow days will be added onto the school year as needed.

BOE Approved: December 8, 2022  
 Revision Approved: December 19, 2023

± Staff Convocation is for all staff of the Waterford Public Schools  
 \* Professional Development is for Administrators, Teachers, Paraprofessionals 8 AM-3 PM  
 \*\* Full day for Paraprofessionals